



**ST. MATTHEW'S
UNIVERSITY**



ST. MATTHEW'S UNIVERSITY

School of Medicine Official Catalog

2024-2026





Contents

Welcome to SMUSOM	4
Mission Statement	7
The SMUSOM Difference	8
Credentials	10
Location and Facilities	12
The Cayman Islands	15
Admissions	20
Financial Information	24
Scholarships	27
Curriculum	28
Faculty and Administration	40
Standards of Performance	48
Center for Learning Enhancement	52
Student Government & Organizations	56

**Exceptional Doctors
Require Extraordinary
Medical Training.**

Welcome to St. Matthew's University School of Medicine

We would like to extend to you a warm welcome to St. Matthew's University School of Medicine (SMUSOM). We are delighted that you have chosen SMUSOM to pursue your medical education. You can rest assured that you have made the right choice. Our student-centered mission drives us to do everything we can to help you achieve your goal of becoming a successful physician.

At St. Matthew's University School of Medicine, our intentionally small class sizes allow our faculty and staff to provide more attention to your academic and personal needs. This individualized support is complemented by our Center for Learning Enhancement, where we offer personalized care in addressing your educational and personal challenges. Our curriculum is carefully crafted to maximize your success and is aligned with North American standards of medical education.

Students at SMUSOM begin early clinical experiences in their second year. Our exceptional pre-clinical curriculum and clinical shadowing programs at Cayman's world-class hospitals and clinics help our students understand the powerful link between basic sciences and clinical practice. This is a great way to bridge the gap between the theory and practice of medicine. SMUSOM boasts state-of-the-art IT infrastructure, classrooms, ample study spaces and advanced learning platforms, which are among the most advanced in medical education today.

With residency placements in outstanding programs such as the Mayo Clinic, Duke University, Johns Hopkins and McGill University, our graduates are a testament to the success of our educational approach. This success is partly due to the high quality of our faculty, who are experts in their fields and come from all over the world.

Our alumni network is robust and thriving, with graduates excelling in various specialties across the globe. Staying connected with our alumni provides current students with invaluable mentorship, networking opportunities and guidance as they navigate their medical careers. The achievements of our alumni inspire and motivate us to continually strive for excellence in medical education.

Beyond academic activities, Grand Cayman offers fun and entertainment to help you relax after intense study sessions. The island features some of the world's best beaches and finest restaurants, all within a setting known for its exceptional safety profile.

Upon completing the Basic Sciences portion of your education, you will apply what you have learned in the classroom through clinical rotations at top teaching hospitals in the U.S. or Canada. At St. Matthew's University School of Medicine, we are dedicated to helping you meet your career goals by working closely with you to ensure that you gain the experience and credentials necessary to secure a residency in your chosen field. Our dedicated clinical staff is committed to your success, providing student-centered support and passion.

Our curriculum emphasizes a strong work ethic, teamwork, compassion for patients and a continuing curiosity about the evolving science of medicine. We look forward to assisting you as you pursue your dream of becoming a successful physician.

Sincerely yours,

Gordon Green, MD

Executive Dean





Mission Statement

The St. Matthew's University School of Medicine's mission is to provide students of diverse backgrounds with the opportunity to acquire the medical and clinical expertise needed for a successful career as a practicing clinician, along with the skills and confidence needed to critically evaluate and apply new information.

In order to fulfill this mission, the school's program is structured around certain ideals, which embody its view of the essential qualities of today's practicing physician. These ideals are defined in the six competencies adopted by St. Matthew's University School of Medicine and summarized below:

PATIENT CARE

Students must be able to provide patient care that is compassionate, appropriate and effective for the treatment of illness and the promotion of health.

SCIENTIFIC & MEDICAL KNOWLEDGE

Students must demonstrate knowledge about established and evolving biomedical, clinical and associated sciences as well as the ability to apply this knowledge to the practice of medicine throughout the life cycle.

LIFELONG LEARNING, SCHOLARSHIP & COLLABORATION

Students must be able to examine and evaluate their patient care practices, appraise and assimilate scientific evidence, and use this information to improve their abilities.

PROFESSIONALISM

Students must demonstrate a commitment to the highest standards of professional responsibility, adherence to ethical principles and sensitivity in all interactions with patients, families, colleagues and others with whom physicians must interact in their professional lives.

COMMUNICATION & INTERPERSONAL SKILLS

Students must display interpersonal and communication skills that foster effective information exchange and build rapport with patients, their families, and professional associates.

SOCIAL & COMMUNITY CONTEXT OF HEALTHCARE

Students must demonstrate knowledge of and responsiveness to the larger context of health care and the ability to effectively call on system resources to provide care that is of optimal value to the health of the individual and of the community.

1997

**St. Matthew's University
School of Medicine was
established over 25 years ago**

The SMUSOM Difference

Proven Quality of Education

St. Matthew's University School of Medicine (SMUSOM) offers students a medical education that is completely focused on the success of our students. The result is a proven quality education.

GRADUATES

More than 2,000 successful graduates have earned residencies and/or permanent licensure in the U.S., Canada and numerous other countries.

RESIDENCY PLACEMENT

Recent residency placements in outstanding programs such as the Mayo Clinic, Johns Hopkins, NYMC Metropolitan Hospital Center, St. Josephs Medical Center (California), Northwestern University, the University of Florida, McGill University and Duke University.

ACCREDITATION

Our accreditor, the Accreditation Commission on Colleges of Medicine (ACCM), is recognized by the World Federation of Medical Education (WFME). Our students are eligible to practice in the U.S., Canada and in many other countries.

LICENSING

Licensing: St. Matthew's University School of Medicine is one of the few international medical schools both approved by the State of New York and licensed in the state of Florida. See the "Credentials" section for more information.

FACULTY

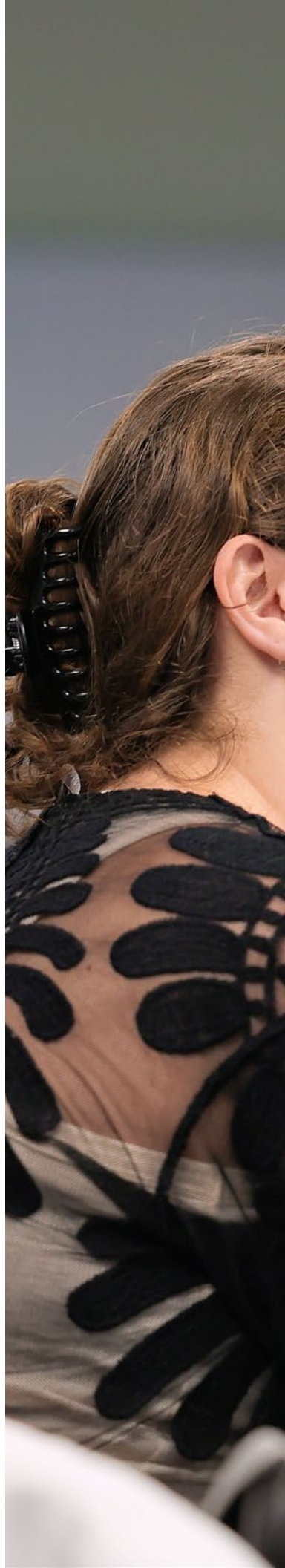
Highly credentialed, experienced faculty members all hold an MD or PhD (or equivalent).

CLINICAL ROTATIONS

Premier clinical training sites at top teaching hospitals in the U.S. and Canada.

CURRICULUM

Excellent U.S. Medical Licensing Examination (USMLE) review course, coupled with comprehensive USMLE preparation integrated throughout the curriculum.





Commitment to Student Success

At SMUSOM, we are as committed to your dreams as you are. Throughout your ten semesters with us, we will do everything we can to ensure your success by supporting all aspects of your education and student experience.

FOCUS ON TEACHING

Dedicated, talented faculty whose time commitments are focused on teaching and mentoring.

SKILLS TRAINING

Unique first semester Student Development Course, offering study skills, exam strategies, peer support and stress management.

CENTER FOR LEARNING ENHANCEMENT

Offers special faculty reviews and tutoring, and student academic coaches.

CENTER FOR EXCELLENCE IN MEDICAL EDUCATION

Educational workshops, clinical pathological conferences and research in medical education.

STUDENT MENTORS

Student mentors understand the challenges of adjusting to life in medical school and are eager to see you succeed.

INDIVIDUALIZED ATTENTION

7:1 student-to-faculty ratio encourages close student-faculty interaction.

Our students achieve exceptional scholastic success, with U.S. licensing examination pass rates comparable to U.S. schools and well above the average of other non-U.S. schools.

Credentials

Join an Accredited Medical School

- The World Health Organization lists St. Matthew's University School of Medicine in the World Directory of Medical Schools (search.wdoms.org).
- The Educational Commission for Foreign Medical Graduates officially recognizes St. Matthew's University School of Medicine (www.ecfmg.org).
- The Government of the Cayman Islands, B.W.I., has fully chartered St. Matthew's University.
- The accrediting body for the Cayman Islands, and consequently St. Matthew's University School of Medicine, is the Accreditation Commission on Colleges of Medicine (ACCM). Learn more at accredmed.org.
- The United States Department of Education, via the National Committee on Foreign Medical Education and Accreditation (NCFMEA), reviews the standards that countries use to accredit medical schools. The NCFMEA has determined that the accreditation standards used by the ACCM to accredit St. Matthew's University School of Medicine's medical program are comparable to those used by the Liaison Committee on Medical Education (LCME), the accrediting body that accredits MD-granting medical programs in the United States.
- The FAIMER International Medical Education Directory (IMED) of the Educational Commission for Foreign Medical Graduates (ECFMG) lists St. Matthew's University School of Medicine in its listing of approved medical schools.
- St. Matthew's University School of Medicine is licensed by the Commission for Independent Education, Florida Department of Education (Florida license number 2634). Additional information regarding this institution may be obtained by contacting the Commission at 325 West Gaines Street, Suite 1414, Tallahassee, FL 32399. The toll-free telephone number is 1 (888) 224-6684.
- St. Matthew's University School of Medicine is approved by the State of New York for all clinical rotations, residencies and licensing. Please visit the New York State Education Department Office of the Professions' Website at op.nysed.gov to view the listing of approved schools.





Top Location and Facilities

Grand Cayman is not only a beautiful location for our campus, it is also one of the safest and most modern islands in the Caribbean.

St. Matthew's University School of Medicine offers:

PRE-CLINICAL TRAINING

SMUSOM students are exposed to clinical opportunities with Cayman physicians in multiple hospitals and clinics.

ADVANCED INFRASTRUCTURE

As one of the largest financial centers in the world and with a thriving tourist industry, Grand Cayman has a highly developed infrastructure comparable to the U.S.

LIFESTYLE

The Cayman Islands enjoy one of the highest per capita incomes in the world. Grand Cayman has hundreds of restaurants, scores of banks, world-class hotels, and many opportunities for diving, horseback riding and other recreational activities.

SAFETY

Grand Cayman has one of the lowest crime rates in the Caribbean.





People from more than 100 countries live and work in this British Overseas Territory, creating a lively and unique blend of cultures.

HEALTHCARE

The Cayman Islands has a world class health care system that includes three state-of-the-art hospitals, and boasts one of the highest physician-to-population ratios in the Caribbean.

CULTURE

As part of the British West Indies, the Cayman Islands is an English-speaking country that maintains its rich Caribbean culture and charm.

CONVENIENCE

Grand Cayman is less than an hour's flight from Miami, and also has direct flights from Atlanta, Chicago, Charlotte, Houston, New York, Tampa, Toronto, Dallas and other international locations.

CAMPUS

Our modern, state-of-the-art Grand Cayman campus facilities include wireless technology that is available throughout bright, air-conditioned classrooms, labs, the library and student lounges.

HOUSING

Students may live in inviting residence suites with modern amenities, internet service and easy access to the famous Seven Mile Beach.



LOM

Offshore Financial Services



Scotiabank

SCOTIABANK GIRLS AND A KIDS
TENDERS LOCAL

bon Vivant
Dinner Salads

184 944

170763

142 703

The Cayman Islands

Cayman Life

Within the vibrant blue waters of the Caribbean is Grand Cayman, one of the three Cayman Islands. Not only does Grand Cayman offer pristine beaches and world-class diving, it boasts numerous attractions, shopping opportunities and locations to explore, including the capital city of George Town. As the largest of the three islands, Grand Cayman offers many familiar amenities and modern conveniences, including dining, transportation, entertainment and health care.

Only 480 miles from Miami, Florida, 50 miles south of Cuba, and 180 miles northwest of Jamaica, the island is easily accessible. There are at least 55 flights per week entering Grand Cayman and 28 from Miami alone. Major carriers such as Cayman Airways, American Airlines, Jet Blue, United, Delta, Southwest, WestJet and Air Canada offer direct flights from major cities, including Chicago, Toronto, New York, Charlotte, Atlanta, Houston, Tampa and London.

The Cayman Islands' remarkable success as a financial center and tourist destination has transformed the nation into a dynamic society that has every modern convenience but still retains the charm and vibrancy of the Caribbean. People from more than 100 countries live and work in this British Overseas Territory, creating a lively and unique blend of cultures.

Everything about this exquisite island paradise is worth experiencing and celebrating, including the hospitality of the local community, rich culture, superb weather, stunning beaches and scenery, great restaurants, exciting nightlife and so much more!

As an integral part of this exceptional community, SMUSOM offers students a quality of life that few universities in any part of the world can match.

THE CAYMAN ISLANDS

- Provide a world-class health care system with one of the highest physicians-to-population ratios in the Caribbean.
- Enjoy one of the highest per capita incomes in the world.
- Offer stability, a strong tourism trade, a safe community, and highly developed technology and health care resources.
- Have one of the lowest crime rates in the Caribbean and a lower crime rate than the U.S.

DINING

Cayman is a culinary playground for chefs and a paradise for people who appreciate excellent food. From haute cuisine, to casual waterfront bars and restaurants, to Jamaican style “Jerk” chicken and pork at roadside stands across the island, there is something for everyone. Diners can choose from traditional Caymanian, Mediterranean, American, Indian, Chinese, Thai and Tex Mex restaurants, or even familiar franchises like Burger King, Wendy’s, Kentucky Fried Chicken and Domino’s Pizza. Other choices range from 5-star sushi to pasta alfresco served by serenading Italian waiters. How about afternoon tea at the Ritz? The Ritz Carlton, Cayman serves an elegant tea with all the trimmings in the Silver Palm Lounge every afternoon (pre-booking highly recommended). Cravings for local food, such as turtle stew, fish rundown and stewed conch can be satisfied at Caymanian hot-spots like Welly’s Cool Spot, Champion House and Corita’s Copper Kettle.

DIVING

Some of the most vibrant coral reef systems in the world exist in Cayman waters, which offer wonderful opportunities to scuba dive, snorkel and swim in tropical seas that are warm year round. Since the main campus and residence halls are just steps away from the famous Seven Mile Beach, students can literally walk out of their class and across the street for a quick swim, snorkel, sunset volleyball game or even to study on the beach.

The calm waters and 200-foot visibility underwater make the Cayman Islands an ideal place to build experience and confidence while scuba diving and snorkeling. Divers and snorkelers can swim with the friendly rays at Stingray City, experience the magic of swimming among a school of Yellowtail fish, or get up close with the various species of turtles, parrotfish, lobsters, eels, sea urchins and squid that populate the famous coral reefs.

As a premier diving destination, Cayman offers a wide choice of local dive operators that offer beginner and advanced scuba courses, as well as affordable dive trips for certified divers. For those with hectic schedules or divers who want to avoid a crowded dive boat, there are plenty of gorgeous dive sites that are an easy swim from shore. Please be sure to observe best safety practices when exploring dive sites independently.

LEISURE & RECREATION

Along with the world class diving, Cayman has a plethora of other activities and points of interest. The Cayman Islands National Museum, which overlooks George Town harbor, houses natural and cultural histories. Just like at home, Camana Bay Cinema offers a state of the art, six screen, stadium seating cinema. With over 33 sporting associations, you are bound to find a league that's right for you — whether it's baseball, basketball, flag football, ball hockey, cricket, cycling or soccer. There are also multiple gyms on the island, as well as endless water sports, including swimming, sailing and kayaking.

Hotels and restaurants, such as the Wharf, Marriott and Ritz Carlton, are sparking off new trends with themed nights on a regular basis, such as disco or smooth latin beats by the pool. For a more casual experience, numerous bars and pubs dotting the island offer a cold drink while watching the sun set over the ocean or their favorite sport on TV.

CLIMATE

The weather on Grand Cayman is pleasant year round with temperatures ranging from 70° to the mid 80's. The rainy season usually lasts from May to November; however, the rains are usually brief and the sun soon returns. Cayman does have a winter, from December to April, which is when there is infrequent rain and the cool breezes return. Hurricane season runs from June to November and Cayman is well prepared. Hurricane information packs are available from Hazard Management Cayman Islands by visiting caymanprepared.gov.ky/

TELECOMMUNICATIONS

State-of-the-art telecommunications services are offered on the island. These services include local and long distance calling, mobile phones, faxing, cable and internet. Service is comparable to that found in the U.S. The main providers are Flow, Digicel, Logic and C3 Communicatons. All Cayman mobile phone service providers use GSM technology. It would be best to consult with your existing provider to ensure that your mobile phone is compatible.

As a guideline, CDMA is the technology used by Verizon and Sprint in the U.S., and Telus and Bell in Canada. GSM is the technology used by Vodafone, O2 and Orange in Europe, T-Mobile in the U.S., and Rogers Wireless and Microcell in Canada.

For more telecommunication information, please visit caymannewresident.com

HEALTH CARE

Offering both state and private health care facilities, Cayman has an excellent health care system. A wide range of specialists, including visiting doctors from the U.S. and elsewhere, operate from private clinics. Grand Cayman is well served by private dentists and optometrists. There are also three hospitals on the island, Health City Cayman Islands, Doctors' Hospital (formerly Chrissie Tomlinson) and George Town Hospital, as well as numerous pharmacies. Many pharmacies have multiple branches, and both Foster's Food Fair and Kirk Supermarket have in-store pharmacies, which are open 12 hours a day.

For a list of local health care contacts, please visit caymanresident.com







CINEMA

CURRENCY

Although the U.S. dollar is not the official currency of the Cayman Islands, it is widely accepted on the island, as are money orders and credit cards. Many merchants quote their prices in both Cayman Island dollars and U.S. dollars and you can pay in either currency. If you pay in U.S. dollars, you will likely receive your change in Cayman dollars.

BANKING

As one of the largest financial centers in the world, banking options in Cayman are extensive. Butterfield Bank, Cayman National Bank, Proven Bank, FirstCaribbean International Bank, Scotiabank and Royal Bank of Canada offer electronic and online banking.

MOVING WITH PETS

Pets are allowed to be brought to Cayman. An import permit or valid animal passport issued by the Department of Agriculture and an official health certificate issued by a government employed or accredited veterinary inspector in the country of origin is required for the importation of dogs and cats.

For further information, please visit the Chamber of Commerce at doa.gov.ky/service/import-and-export-services

TRANSPORTATION

There are many options for navigating the island. People from all the major European countries, most major English-speaking countries (including the United States, New Zealand, Australia, Canada and South Africa), and the following Caribbean countries — Jamaica, Barbados, Dominican Republic, Cuba, and Trinidad and Tobago — are entitled to obtain a Cayman driving license without having to take any further tests. If in doubt, call the Licensing Department at 345-945-8344 or visit dvd.gov.ky

You must apply for a Cayman license within three months of arriving.

Please remember, driving is on the left side of the road like in the U.K. Cayman also offers rentals, leasing and has numerous dealerships for purchasing a vehicle. The island also has a wonderful bus system with seven bus routes, and the buses each have a distinctive colored circle on the front and rear with a route number in the middle. Residents also have the option of having their vehicles imported onto the island.

Please visit New Resident for further details:
caymanresident.com/move/shipping-to-cayman/import-duty



SCHOOLS

The Caymanian school system is based upon the English learning system. Cayman offers primary schools in each district for children 4-11 years of age, as well as government high schools, a community college, a university college and a law school. Private schools are also abundant on the island, including but not limited to, Cayman Prep & High School, Cayman International School, First Baptist Christian School, Montessori By The Sea and St. Ignatius Catholic School. The classes are taught in English, as it is the main language of the island.

Children starting pre-school can begin at the age of two and for primary school the starting age depends on whether they will be attending a British school such as St. Ignatius or American school such as Cayman International School. British schools require children to be the age of four by September and American schools require children to be age of five by September.

For further information and a detailed listing of schools, please visit:

- The Chamber of Commerce at web.caymanchamber.ky/Schools
- New Resident at caymanresident.com/schools

Admissions

Doctor of Medicine (MD) Program

Each candidate is evaluated on the basis of these factors:

- Academic background.
- Overall grade point average.
- Science grade point average.
- Strength of major/minor.
- Letters of reference.
- Personal statement.
- Activities that demonstrate service to the community.
- Personal interview.
- MCAT scores (required for U.S. students).

Candidates must have earned an undergraduate degree from an approved college or university in the United States, Canada or a recognized international institution. Additionally, only a student who has earned 90+ semester credit hours of college credits will be considered for admission.

We recognize that since medicine deals with people, an understanding of literature, art, history, ethics and philosophy is an asset to a physician.

Science and humanities are not mutually exclusive and both are viewed as necessary for the practice of medicine.

The following list of courses indicates the minimal prerequisites that all applicants must complete prior to admission to the medical school. Applicants with lower grade point averages are encouraged to apply if other accomplishments, MCAT scores or work experience demonstrate their aptitudes. It is necessary that students be computer literate.

TO LEARN MORE,
SCAN THE QR CODE
OR VISIT

medicine.stmatthews.edu/admissions





SMUSOM requires the following prerequisites courses:

General Biology	1 academic year (6 credit hours)
Inorganic Chemistry*	1 academic year (6 credit hours)
Organic Chemistry*	1 academic year (6 credit hours)
Language Arts (English)**	1/2 academic year (3 credit hours)
College Math or Computer Science	1/2 academic year (3 credit hours)

**Course must include an attached laboratory.*

***A student may substitute any course that has a writing component, such as a term paper, for the Language Arts requirement.*

A student may substitute 1/2 year of Biochemistry for 1/2 year of Organic Chemistry.

ADMISSIONS COMMITTEE

The Admissions Committee selects students who exhibit the strongest potential to flourish in a medical school environment and execute the duties of a medical doctor ethically and professionally. If the student's credentials meet the admissions criteria, the candidate will be interviewed in-person or by video conference before a final decision is made.

It is the applicant's responsibility to make sure the application is complete. Applicants should submit materials early to ensure a timely decision can be made. The admissions committee will not review incomplete documentation.

NON-U.S. TRANSCRIPTS

Students with academic transcripts from outside the United States and Canada must have them evaluated on a course-by-course basis by an evaluation service such as World Evaluation Services (www.wes.org), Josef Silny & Associates, Inc. (<https://www.jsilny.org>), Global Credential Evaluators (www.gceus.com), or a service that is a National Association of Credential Evaluation Services (NACES) member (www.naces.org).

ADVANCED STANDING AND TRANSFER STUDENTS

Transfer students undergo the same admissions process as first time applicants, in that they must submit a complete application packet to ensure a timely review. Acceptance of transfer credits is at the sole discretion of SMUSOM. St. Matthew's University School of Medicine only provides advanced standing to qualified transfer students from medical schools listed in the World Directory of Medical Schools. SMUSOM will not consider coursework completed through a distance learning program. Students with unsatisfactory records are not considered for advanced standing. Acceptance is contingent upon the recommendation of the Admissions Committee and on the basis of space available within the class.

SMUSOM does not accept transfer students directly into the Clinical Medicine program. Students requesting to transfer into the Clinical Medicine program will only be considered for acceptance into the fourth or fifth semester of the Basic Science program, but to be eligible to do so, they must have passed the United States Medical Licensing Exam (USMLE) Step 1.

We encourage applications from people with work experience in health care. However, chiropractors, podiatrists, dentists and physician's assistants will not be

granted advanced standing based on work experience.

SMUSOM will submit transcripts to any university or college for a student requesting a transfer.

MEDICAL COLLEGE ADMISSIONS TEST (MCAT)

The Medical College Admission Test (MCAT) is required for all applicants who are U.S. citizens, nationals or permanent residents. Taking the MCAT is recommended for all other applicants as well. The MCAT is offered online multiple times per year. Information on MCAT testing dates is available at www.aamc.org

Information regarding your application, dates and locations should be directed to:

Association of American Medical Colleges
Medical College Admissions Test
2450 N. St., NW Washington, DC 20037
Phone: (202) 828.0690

Application for the test must be made approximately one month prior to the desired testing date. SMUSOM's MCAT code is 919. If using the MCAT (THx) system, please use the school name. MCAT scores must be submitted to our Admissions Office in Orlando, Florida.

LETTERS OF RECOMMENDATION

Confidential appraisals by college advisors, instructors, or others are an important part of the application. These recommendations may include a letter from a peer. Ask for recommendations from individuals who can give a concise and thorough assessment of your personality, industry, reliability and motivation. Applicants are given the option of signing a waiver regarding the confidentiality of these letters. At least two letters of recommendation are requested from each applicant.

PERSONAL STATEMENT

Applicants must submit a personal statement with the application form. This offers an opportunity for the applicant to describe personal attributes, characteristics and interests that support a decision to study medicine. The Admissions Committee is interested in participation in research projects, hobbies and health-related employment or experience. Use specific examples to demonstrate motivation, commitment to pursue a medical career and the ability to work with people. Compassion, empathy and the ability to deal with everyday problems are considered important qualities. We focus as much on the determination and life experience of our candidates as on their academic background.

INTERVIEW

When a candidate is favorably considered, the Admissions Committee schedules an interview. For all new students, the interview may be in-person or by video conference. The interview serves both the applicants and the committee by providing an opportunity for the applicant to ask pertinent questions and introduce any special circumstances that should be considered. The committee gains the opportunity to determine if the candidate demonstrates the personal qualities that are required in a good physician.

These qualities include motivation, commitment to a medical career, empathy, compassion, maturity and flexibility in dealing with problems. Notification of Acceptance Letters of acceptance or non-acceptance are sent within one week after the Admissions Committee has reached a decision. Students who are accepted are expected to return a letter of intent promptly. The letter of intent must be accompanied with a fee of \$500 USD to reserve a place in the upcoming class. This seat deposit fee is part of the first semester tuition.

RE-APPLICATION

Unsuccessful applicants may reapply by repeating the admission process. A new application form, a new personal statement and new letters of recommendation must be submitted to St. Matthew's University School of Medicine. We are here to help you through this process.

We are open to both traditional and non-traditional applicants, so we truly encourage your application. Due to our rolling admissions, there is no deadline to apply. However, seats in each class are competitive and early applicants will have the advantage of securing a place in the semester of their choice. Semesters begin in September, January and May.

All immigration and other documentation must be received at the U.S. Admissions Office no later than 30 days before the start of term. See calendar for the schedule.

APPLICATION CHECKLIST

A completed application file for both new and transfer students will include:

- Completed application form
- Official academic transcripts
- Two letters of recommendation
- Personal statement
- Current resume

Submit a completed application form along with other supporting documents to:

St. Matthew's University
School of Medicine
Office of Admissions
11486 Corporate Blvd, Suite
120 Orlando, FL 32817
Or via the website at
www.stmatthews.edu



Financial Information

**TO LEARN MORE,
SCAN THE QR CODE OR VISIT**
[medicine.stmatthews.edu/admissions/
how-to-apply/tuition-and-fees](https://medicine.stmatthews.edu/admissions/how-to-apply/tuition-and-fees)



Doctor of Medicine (MD) Program

TUITION AND FEES

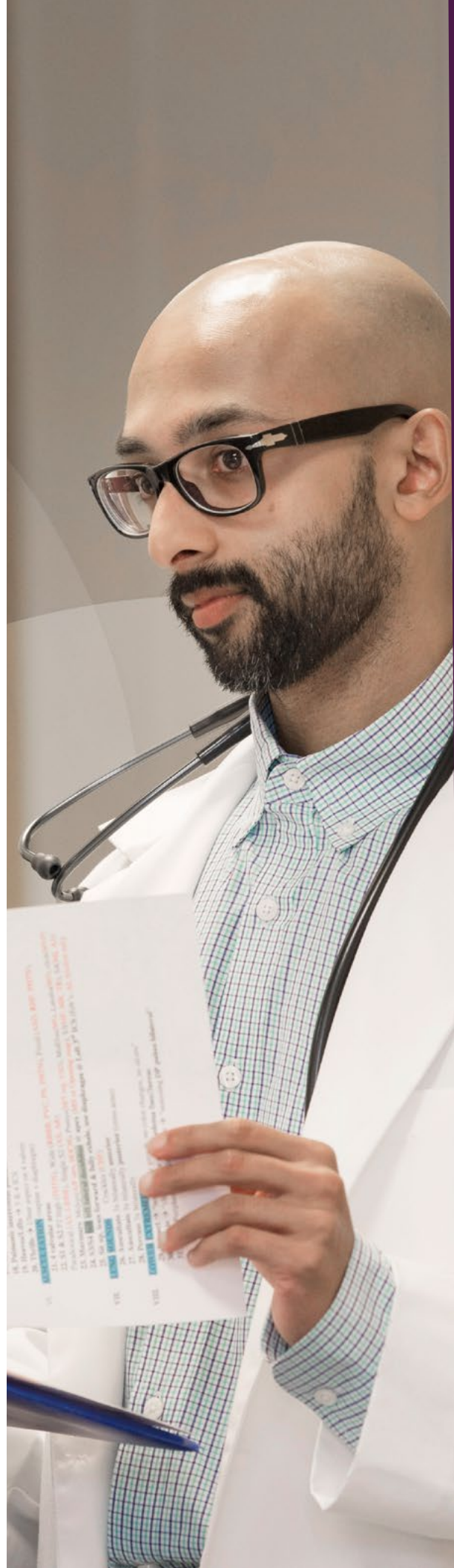
Tuition and fees are billed on a semester-by-semester basis for students in Basic Sciences and in Clinical Sciences. Tuition and fees for students in Basic Sciences are due upon registration and must be received no later than fifteen days prior to the first day of classes. Non-payment by the first day of classes may result in registration being cancelled. Students must pay tuition and fees prior to attending classes or being recorded on the official roll.

Tuition and fees are subject to change. Students with an outstanding balance due are not eligible to register for the next semester without clearing that outstanding balance to the satisfaction of the Financial Office. For students in both Basic Sciences and Clinical Sciences, a \$200 USD late fee will be assessed if tuition and fees are not paid on time.

CLINICAL SCIENCES

Tuition and fees for students in Clinical Sciences are due prior to registration and at least one month prior to the commencement of the semester and/or clinical rotation. Tuition and fees are charged for all clinical rotations.

Students in Clinical Sciences will be billed for an entire semester regardless of the starting date, as long as the student is in rotations. Additional charges may be due if students choose elective rotation with costs exceeding the standard St. Matthew's University School of Medicine subsidy rate. Each student will pay five Clinical Sciences semesters (assuming that no rotations were failed).



TUITION	USD
Tuition per semester - Basic Sciences	\$16,802
Tuition per semester - Clinical Sciences	\$22,406
Part-Time Tuition per Credit Hour	\$765
FEES	USD
Basic Science Administrative Fee per Term	\$5,970
Clinical Medicine Administrative Fee per Term	\$4,144
Part-Time Administrative Fee per Credit Hour	\$270
Malpractice Insurance - Clinical Science only (per semester)	\$295
Health Insurance (per semester, unless proof of coverage)	\$653
Transcript Request	\$10
Letter of Reference – First 3 free, thereafter	\$10
Document copies up to 15 pgs (Over 15 pgs., \$1 per page)	\$15
Recreation Fee (Cayman Only)	\$35
National Board Fee	\$500
Leave of Absence Fee	\$500
Graduation Fee	\$500
Background Check Fee (Depending on the required extent of search)	\$50-\$250
Late Registration Fee	\$250
Lab Fees	\$150-\$250
White Coat Ceremony Fee	\$60
Late Payment Fee	\$200
Returned Check Fee	\$35
Information Technology Fee* (per semester)	\$100
Cayman Entry Fee**	\$113
Seat Deposit	\$500
Review Materials (Fifth Semester)	\$935

*Laptops are required for all students

**Cayman Island Government Fee

BASIC SCIENCES REFUND POLICY

All refunds will be made within thirty (30) days of the withdrawal date. Before any refund can be initiated, a withdrawal form must be completed and submitted to the Dean of Basic Sciences.

Basic Sciences Tuition will be refunded according to the following schedule*:

Prior to the start of the semester	100%
During the first week of the semester	93%
During the second week of the semester	87%
During the third week of the semester	80%
During the fourth week of the semester	No Refund

Any new applicant to SUSOM requesting withdrawal within three days of payment of the seat deposit shall receive a full refund of all tuition and fees paid, as well as the seat deposit.

**All fees, including the first semester seat deposit fee of \$500.00, are excluded from this refund policy and are not refundable (after the first three days' exemption as previously described).*

CLINICAL SCIENCES REFUND POLICY

Any student withdrawing from a clinical rotation, subsequent to assignment and acceptance, will not be eligible for a refund on tuition for that semester of rotation.

OTHER CHARGES

Students attending Basic Sciences on Grand Cayman will be billed monthly for any miscellaneous charges accrued. Payment is due upon receipt of these invoices. Non-payment of accounts will result in the loss of credit privileges on campus.

FINANCIAL AID

We realize that attendance at medical school represents a significant investment for our students and their families. At St. Matthew's University School of Medicine, we are committed to doing everything we can to make your medical education more accessible.

This includes maintaining a cost-effective tuition that is substantially less than the average per semester tuition among U.S. public medical schools, as surveyed by the American Association of Medical Colleges.

U.S. FEDERAL DIRECT LOAN PROGRAM

St. Matthew's University School of Medicine has been approved by the United States Department of Education for participation in the William D. Ford Federal Direct Loan Program. Qualified citizens and permanent residents of the United States may be eligible to receive funding from the Direct Loan programs to help pay for the cost of their education.

The Free Application for Federal Student Aid (FAFSA) must be completed to determine eligibility. St. Matthew's University School of Medicine's school code is 037643.

CANADIAN STUDENT LOANS

Canadian students are eligible for federal loans through the Ministry of Education Student Support Branch in the province of residence. Students may apply for up to 52 weeks of financial assistance annually. Work directly with your individual province for information regarding requirements. St. Matthew's University School of Medicine's school code for applying is NUBQ.

For information regarding financial aid, email finaid@stmatthews.edu or call 1 (800) 498-9700.





Scholarships

In order to best support our students and help make an excellent medical education more accessible, we offer a variety of meaningful grants and scholarships. These include:

- U.S. Academic Scholarship
- Canadian Merit Scholarship
- Canadian Citizens Grant
- Transfer Scholarship
- International Scholarship
- Opportunity Grant
- Cayman Islands Scholarship
- Jha Family Scholarship

For more information about these opportunities, please visit:

medicine.stmatthews.edu/admissions/how-to-apply/scholarships

OR SCAN THE QR CODE



Curriculum

Doctor of Medicine (MD) Degree

Our curriculum integrates basic and clinical science to give students an understanding of the human body in health and disease. This approach enables students to use their knowledge not just to treat patients but also to prevent disease and promote good health.

OUR CURRICULUM INCLUDES CARING

Throughout the first five semesters of the 4-year MD program, students participate in a series of basic science courses that focus on the art of patient care and preventive medicine. Students examine the role of medicine in the community and the effect disease has on the individual and families. Special segments deal with the ethics of the physician-patient relationship and with ethical dilemmas posed by modern medicine.

Basic Sciences Program

BASIC SCIENCES OVERVIEW

The gross and microscopic structure and function of each organ system is presented in lecture format with clinical correlations. Laboratories provide visual reinforcement and give students the opportunity to develop the ability to make observations and hone analytical skills. Professors focus on how disease interrupts the normal function of organ systems and the therapy needed to treat these abnormal processes. Lectures, labs and small group formats reinforce analytical skills. Students are required to complete 160 credits in Basic Sciences. The first semester courses are numbered MD 1--, second semester courses are numbered MD 2--, and so on. If a course is canceled, an appropriate course will be substituted. Any canceled course will be offered no later than the next academic semester.

Clinical Shadowing Program

Our medical education extends beyond the classroom into hospitals and clinics. Students gain invaluable knowledge by experiencing real health care settings and participating in community outreach.

The Clinical Shadowing Program gives our students the opportunity to make meaning of the knowledge and lessons learned from lectures and textbooks in a real-life clinical setting.

They will perform medical examinations and procedures, and work with other members of the health care team. Program preceptors represent a diverse set of specialties, such as internal medicine, surgery, pediatrics and orthopedics, to name a few.

The Clinical Shadowing Program is also crucial to a student's preparation for the USMLE Step 1 examination and their clinical rotations that follow.



Calendar 2024-2026

Basic Sciences Calendar

SEMESTER	TERM DATES	DIPLOMA DATES
Spring 2024	Jan 8 - Apr 19	January 12/March 15
Summer 2024	May 6 - Aug 16	May 17
Fall 2024	Sep 2 - Dec 13	September 6
Spring 2025	Jan 6 - Apr 18	January 10/March 14
Summer 2025	May 5 - Aug 15	May 23
Fall 2025	Sep 1 - Dec 12	September 5
Spring 2026	Jan 5 - Apr 17	January 9/March 13
Summer 2026	May 4 - Aug 14	May 22
Fall 2026	Aug 31 - Dec 11	September 4

Please note that as SMUSOM is an international medical school and operates on a three semester per year basis; public holidays from your home country may not be observed.

COURSE	COURSE NAME	CREDITS
SEMESTER 1		
MD 111	Patient-Doctor Relations Part-I	2
MD 122	Principles of Research & Evidence Based Medicine	2
MD 140	Histology & Cell Biology	10
MD 166	Developmental and Gross Anatomy	16

COURSE	COURSE NAME	CREDITS
--------	-------------	---------

SEMESTER 2		
MD 236	Genetics	6
MD 243	Biostatistics and Epidemiology	4
MD 270	Biochemistry & Molecular Biology	10
MD 282	Physiology	12

COURSE	COURSE NAME	CREDIT(S)
--------	-------------	-----------

SEMESTER 3		
MD 300	Medical Spanish (Elective)	1
MD 311	Patient-Doctor Relations Part-II	2
MD 332	Microbiology & Immunology	12
MD 383	Behavioral Sciences & Ethics	13
MD 369	Neuroscience	9

COURSE	COURSE NAME	CREDITS
--------	-------------	---------

SEMESTER 4		
MD 411	Patient-Doctor Relations Part-III	6
MD 468	Pharmacology	6
MD 482	Pathology I	12

COURSE	COURSE NAME	CREDIT(S)
--------	-------------	-----------

SEMESTER 5		
MD 552	Pathology II	8
MD 562	Clinical Therapeutics	1
MD 582	Introduction to Clinical Medicine	7
MD 592	Foundations of Clinical Medicine	16

First Semester

MD 111

PATIENT-DOCTOR RELATIONS PART I

2 CREDITS

This course is the first in a series of required two-credit courses that provide medical students with a progressive introduction to the skills and attitudes that are requisite in becoming competent, compassionate physicians. In this first course, students will come to appreciate the essential nature of a complete history. They will also develop their skills in self-reflection and learn to give and receive constructive feedback to and from their peers. Throughout the course, students must develop the ability to communicate concisely, present patient histories accurately to colleagues, confidently share information and take advice, and effectively write patient notes.

MD 111

PRINCIPLES OF RESEARCH AND

EVIDENCE-BASED MEDICINE

2 CREDITS

Students will develop research skills related to Evidence-Based Medicine (EBM). They will be introduced to concepts of research analysis and critical thinking. At the end of this course, the students will be able to identify and frame a clinical question based on therapy, diagnosis, prognosis or etiology; develop a focused search strategy to identify articles that best answer the clinical question; identify and use the appropriate medical database; and critically appraise articles for validity.

MD 140

HISTOLOGY & CELL BIOLOGY

10 CREDITS

This course examines the microanatomy of cells, tissues and organs. Lectures illustrate the microstructure of major tissues and organs in relation to their function. Laboratory exercises use the light microscope to study these components, and make use of slides and electron micrographs for review and discussion. This lab-oriented course presents the molecular biology and histology of normal cells tissues, and organ systems at various

developmental functional stages. Students will learn the unique characteristics of the four basic tissues of the body: epithelial tissue, connective tissue (including bone, cartilage and blood), muscle tissue and nervous tissue. Student will learn how individual cell functions interact with one another and how such interactions are accomplished from the tissue levels to the organ levels. The course introduces molecular and control systems, and prepares students for future understanding of normal (homeostasis) system and pathological conditions. In addition, students learns how molecular building blocks are utilized for growth and differentiation, wound healing and tissue repair, defense mechanisms and transfer of hereditary characters. (Lecture/Lab).

MD 166

DEVELOPMENTAL AND GROSS ANATOMY

16 CREDITS

This course integrates gross human anatomy and medical embryology, allowing students to understand the relationship of embryological development to gross structure, and the mechanisms of congenital abnormalities. Through lectures, use of human plastinated cadavers, evaluation of radiographs (including CT and MRI) and clinical correlations, students acquire a basic knowledge of the normal gross structure, functional and clinical anatomy of organs, and systems of the adult human body, including the brain, spinal cord, back, thorax, abdomen, pelvis and perineum. The embryological aspects including fertilization and placentation, and development of each organ and system, from gametogenesis to birth, is discussed along with the gross anatomy. Clinical correlative sessions illustrate medically relevant normal and abnormal findings, and common congenital malformations are used to demonstrate mechanisms of teratogenesis. Computer-based tutorial programs and structured reviews are used to supplement the lectures and labs. (Lecture/Lab).

Second Semester

MD 236
GENETICS
6 CREDITS

This course provides students with an understanding of the principles and concepts upon which current clinical genetic practice (diagnosis, treatment and counseling) is based. This course covers the genetics of human populations and introduces recent and ongoing discoveries so that their future applications may be understood. It builds upon the foundation of basic material introduced in histology. (Lecture).
Prerequisite: Histology & Cell Biology.

MD 243
BIOSTATISTICS AND EPIDEMIOLOGY
4 CREDITS

Students master basic descriptive and inferential tools to understand statistical evaluation of research. This course will help students learn how to conduct epidemiologic investigation, how to critically review medical literature and how to use such information in a clinical environment. Students acquire a basic level of proficiency in epidemiologic principals and understand how to apply epidemiology in clinical practice. (Lecture).

MD 270
BIOCHEMISTRY & MOLECULAR BIOLOGY
10 CREDITS

The biochemical pathways of living organisms are studied to include the structure of biomolecular chemistry and an understanding of energy yielding processes and the transfer of genetic material. This course includes the study of the chemistry and reactions of constituents of living matter, including the carbohydrates, lipids, proteins, nucleic acids, vitamins, coenzymes and minerals; the chemistry and regulation of the reactions and processes of whole organisms; endocrinology; enzymology; nutrition; intermediary metabolism; and biochemical mechanisms in selected disease states. Theory and application of classical and emerging technologies in biochemical lab analysis will be covered. (Lecture).
Prerequisite: Histology & Cell Biology.

MD 282
PHYSIOLOGY
12 CREDITS

The principles of human physiology are first studied then followed by an intensive overview of human organ system physiology to include neural, muscular, cardiovascular, respiratory, endocrine, gastrointestinal and kidney physiological processes. The goals of this course are to enhance the student's ability to critically analyze the cell biology mechanisms governing the functions of each system and to utilize physiological concepts in problem solving. Small groups and the hands-on lab component of the course reinforce lecture material. (Lecture/Lab).
Prerequisite: Developmental and Gross Anatomy.

Third Semester

MD 311
PATIENT-DOCTOR RELATIONS PART-II
2 CREDITS

Students will learn to obtain a neurological history using the Calgary-Cambridge guide to the medical interview (patient-centered approach). They will also learn to understand specific signs and symptoms of neurological conditions (including eye and ENT).
Prerequisites: All first and second semester courses.

MD 332
MICROBIOLOGY & IMMUNOLOGY
12 CREDITS

This course considers the characteristics and properties of microorganisms, their role in disease processes, and select aspects of diagnosis and treatment of infectious disease. Other topics include the basic principles of bacteriology, mycology, parasitology, virology, immunology and microbial genetics, including cultural characteristics and pathogenic properties of medically important species of bacteria, fungi and viruses. This course covers the basic immunologic concepts of the cells and humoral products of the immune system. Lectures include the molecular biology and genetics of antigen recognition and immunoglobulin production, plus the characteristics and detection of antigen-antibody reactions. The approach is to correlate these basic concepts with

clinical manifestations of disease, the immunopathologic mechanisms of hypersensitivity, autoimmunity, transplantation, tumor immunology, hematology, reproduction, infectious diseases and immunodeficiency. (Lecture/Lab).

Prerequisites: All first and second semester courses.

MD 369

NEUROSCIENCE

9 CREDITS

This course will include an interdisciplinary investigation of the physiology and the gross and microscopic structure of the brain, spinal cord and nervous system of humans.

Aspects of brain energy metabolism, neurotransmitter synthesis and degradation, and psychopharmacology are presented. This course integrates anatomical and physiological material to assist the student in understanding common neurological disease processes.

Laboratory exercises will provide slides and dissection of the human brain, spinal cord and relevant structures.

The student will be introduced to modern methods of neuroimaging, including CT scans and MRI. (Lecture/Lab).

Prerequisites: All first and second semester courses.

MD 383

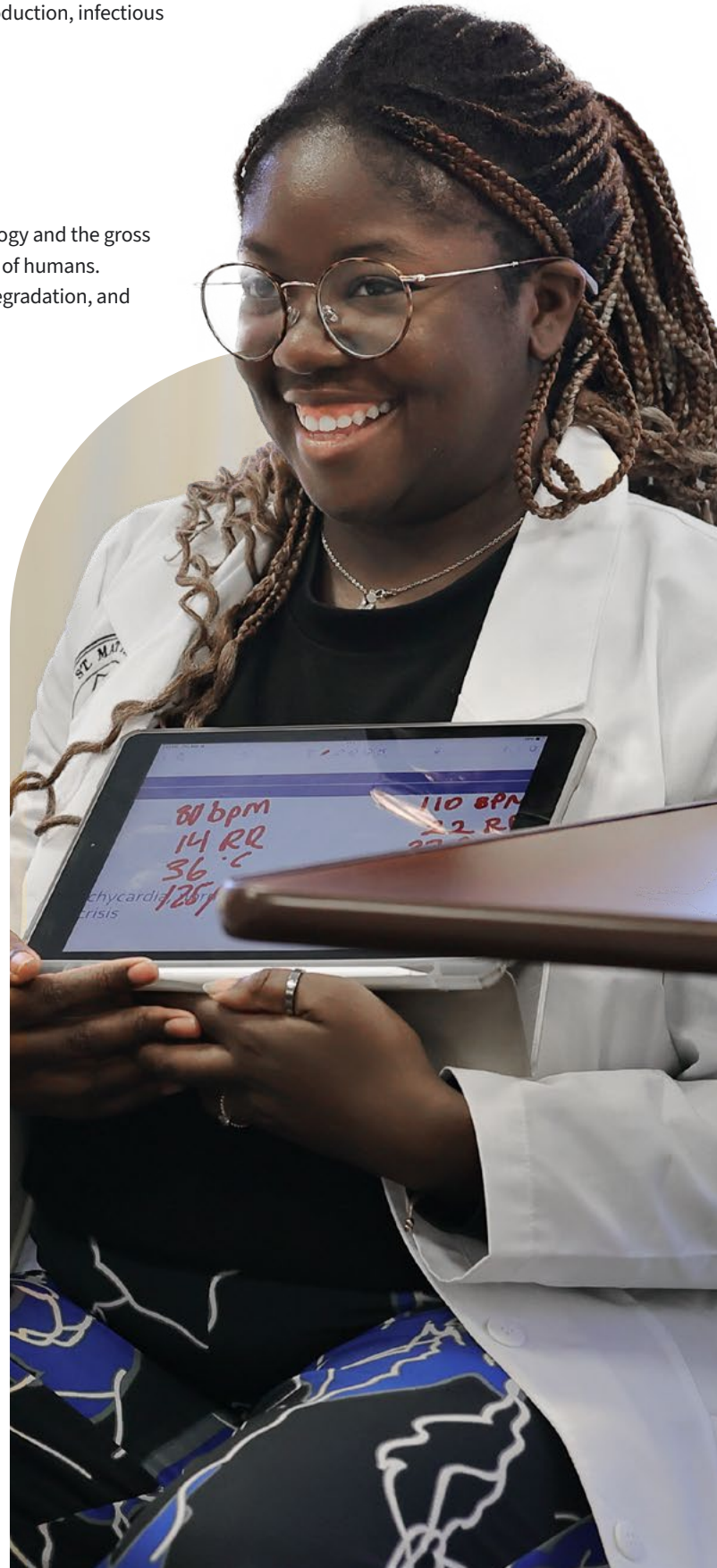
BEHAVIORAL SCIENCES & ETHICS

13 CREDITS

Abnormalities in human functioning are examined and students are introduced to psychiatric evaluation, nomenclature and clinical writing, and how to conduct a mental status evaluation. The course provides an in-depth study of the DSM 5 psychiatric diagnostic categories.

These range from childhood disorders through geriatric dementia. Epidemiology and pathogenesis, differential diagnosis, course and prognosis, and current treatment strategies are presented. Additionally, students participate in case-based discussions of ethical dilemmas facing today's health care provider. Ethical analysis of moral reasoning is emphasized. Students are challenged to reflect on their personal values and moral obligations as physicians. (Lecture).

Prerequisites: All first and second semester courses.



MD 300
MEDICAL SPANISH
1 CREDITS

This course will provide the basic communication skills for medical practice. Its focus will be the usual verbal exchanges that happen in patient-doctor relationships. Emphasis will be placed in the most common mistakes that have the potential to impair compliance with treatment and overall trust, while keeping the broad aim of the course on improving the understanding of basic Spanish in the medical setting. (Lecture).

Fourth Semester

MD 411
PATIENT-DOCTOR RELATIONS PART-III
6 CREDITS

Students will develop a practical approach to patient care by integrating the knowledge learned in Basic Sciences with the acquired skills of clinical practice. Study the clinical presentation of major systemic disease processes, formulate differential diagnoses, and develop diagnostic approaches to the various conditions, including pertinent laboratory tests and imaging studies. Be able to take a structured medical history from a patient using the Calgary-Cambridge model of communication. Be able to perform a focused physical examination and write relevant, well-researched and well-organized Integrated Clinical Encounter (ICE) notes. (Lecture/Lab).

MD 468
PHARMACOLOGY
12 CREDITS

This course builds upon the students' understanding of pharmacology, providing practical experience of medical therapeutics in a case-based format. The fundamentals of pharmacokinetics and pharmaceutical preparations, including drug actions and interactions, are presented, as well as adverse effects and pharmacological actions. The student must be able to understand the mechanism of action of common classes of medications and be able to evaluate basic pharmacological data. This course also covers all major classes of therapeutic medications used in clinical practice in the treatment of disease processes. The clinical component will provide students with the necessary background to practice rational drug therapy as it applies to clinical practice. (Lecture).



MD 482
PATHOLOGY I
12 CREDITS

This first section of a two-semester comprehensive curriculum is an introduction to the responses of cells, tissues and organs to major disease processes. Lectures and laboratory demonstrations will introduce students to definitions, etiology, gross and microscopic lesions, and pathogenesis. Emphasis is placed on basic concepts and principles of disease processes. (Lecture/Lab).
Prerequisites: Microbiology & Immunology.

Fifth Semester

MD 552
PATHOLOGY II
8 CREDITS

This second part of the Pathology curriculum focuses primarily on systemic pathology and disease processes. In this course, emphasis is placed on relating pathophysiological and biochemical abnormalities of disease processes to clinical signs and symptoms of disease. Pulmonary, cardiac, gastrointestinal, endocrine, rheumatic, orthopedic, renal, neurological and hematology organ systems are covered. Knowledge and the understanding of the etiology and pathogenesis of diseases is gained through the intense examination of clinical cases, gross material, selected microscopic slides, clinical laboratory data and X-rays. (Lecture/Lab).
Prerequisites: All third and fourth semester courses.

MD 562
CLINICAL THERAPEUTICS
1 CREDIT

This course builds upon the students' understanding of pharmacology, providing practical experience of medical therapeutics in a case-based format. The students, working individually and in teams, have the opportunity to participate in therapeutic decision-making in clinical cases, receive feedback regarding their decisions and benefit from discussions led by clinicians involved in the practical application of medical interventions in common disease states. This course is integrated with the other co-requisite courses to allow students to attain conceptual understanding of common medical conditions and provide them with the necessary skills and perspective for their transition to the clinical wards.
Prerequisites: All third and fourth semester courses.

MD 582
INTRODUCTION TO CLINICAL MEDICINE
7 CREDITS

This team-taught course helps the student to prepare for hospital clerkships. Students will gain practical knowledge and experience in the diagnosis and treatment of patients. Following an integrated case-based curriculum, students will take histories and perform physical examinations on trained standardized patients. They will work individually and in teams to discuss differential diagnoses and investigation strategies, and will use the information gained to formulate management and disposition plans. Throughout this course, there is an emphasis on the need to listen and communicate effectively with colleagues, team members, and most importantly, with patients. The students will have an opportunity to spend time with practicing physicians in a hospital/clinical setting. Students will be evaluated both formatively and by objective structured clinical examination (OSCE) standards.
Prerequisites: All third and fourth semester courses.

MD 592
FOUNDATIONS OF CLINICAL MEDICINE
16 CREDITS

This course utilizes lectures and other materials to provide a structured, integrated review of Basic Sciences. An emphasis is placed on the understanding of disease processes and clinical problem solving. Students attend daily live lectures. Early in the course, students are given a diagnostic pre-test to help identify problem areas and individualize learning goals. At the end of the course, students are administered a full-length, simulated comprehensive exam.
Prerequisites: All third and fourth semester courses.



Clinical Sciences Program and Clerkship Rotations

At the end of the fifth semester of Basic Sciences, students leave Grand Cayman to start clinical clerkship rotations for semesters 6-10. During the fifth semester, students participate in a Clinical Orientation where they receive information on available clerkships. The Clinical Sciences department makes every effort to assign students to the hospital that best suits their qualifications, requirements and desires. Core rotations will be taken and completed in a teaching hospital.

THIRD-YEAR CORE ROTATIONS COVER FIVE SPECIALTIES

Internal Medicine	12 weeks
Surgery	12 weeks
Pediatrics	6 weeks
Obstetrics & Gynecology	6 weeks
Psychiatry	6 weeks

CLINICAL ROTATIONS

The Clinical Clerkship is an exciting and enriching aspect of medical training. It requires both determination and sacrifice. The Clinical Dean and Clinical Sciences department team will work closely with students to ensure they fully benefit from clinical rotations and are well prepared for successful residencies.

ASSIGNMENT POLICY

The Clinical Coordinator, with permission from the Dean and Associate Dean of Clinical Sciences, assigns clinical rotations. Students must receive a passing score on the USMLE Step 1 exam prior to commencing their third year clinical clerkships. Although SMUSOM arranges and schedules the Core Rotations, the selection and scheduling of electives is done by the student via an application that must be approved in advance by SMUSOM. Most students benefit from choosing electives in a variety of hospitals, particularly in hospitals or geographic locations where they hope to secure a residency. Students receive a clinical clerkship packet before completing Basic Sciences. This information helps them prepare for clinicals and design their senior year by identifying elective sites.

CORE CLERKSHIP EXAMS

Each student is required to take The National Board of Medical Examiners (NBME) Core Clerkship Examinations. Testing in each of the Cores is conducted multiple times per year. There is an NBME examination for all Core Clinical Clerkships. Students are eligible to sit for any Core Examination following the completion of that Core. The Core Clerkship Examination should be taken at the first opportunity it is offered following the completion of the rotation. Students are not permitted to take an exam until they are within one week of completing a rotation or have completed the rotation. The Clinical Sciences department arranges testing.

A student will not receive official transcript credit for a Core Rotation until the student receives a passing grade of 70% with the combined scores of the preceptor evaluation, daily log, NBME exam and required weekly assignments. The grades from these components are combined for a final transcript grade.

CLINICAL ROTATION OBJECTIVES

The clinical program requires 72 weeks. The objectives of the clinical rotations are to:

- Expose students to a range of experiences that integrate information from various specialties.
- Ground students in thorough basic and advanced clinical training to prepare them for residency training.
- Encourage students to value learning as a life-long process.

Third-Year Core Clerkship Curriculum

SURGERY

Students follow patients through surgical assessment, preparation for surgery, the surgical process in the operating room, the intensive or immediate care of the patient in the recovery period and follow-up care. Students engage in intensive pre-surgical preparation on each case, including the study of case histories, prior physical examinations and prior treatment, and diagnoses. Follow-up on post-surgical cases extends to learning about the support of family and friends, community resources and the discharge process.



INTERNAL MEDICINE

Students learn to conduct a thorough diagnostic work-up, including the history and physical examination, with emphasis on detailed neurological evaluation of the patient and the design of treatment plans. Students gain sensitivity to dual diagnosing and differential diagnosing. Students participate in grand rounds, work individually with patients and participate in the treatment plan. Additionally, seminars on selected topics by residents or preceptors are incorporated.

OBSTETRICS/GYNECOLOGY

Students are presented with all phases of patient care related to fertility concerns, pregnancy, labor, delivery and postpartum care. Students participate in family planning counseling, and learn to detect, diagnose and devise a treatment plan for gynecologic diseases. Normal and pathologic cases are observed, including normal and cesarean deliveries.

PEDIATRICS

Students learn to develop rapport with young patients and diagnose, develop and carry out a treatment plan for infants, children and adolescents. Students gain a greater sensitivity to the interdependence between the patient and the parent, and learn how to interact with each to promote treatment and recovery.

PSYCHIATRY

Students learn to diagnose mental disorders. Emphasis is placed on taking a psychiatric history and mental status, as well as making differential diagnoses. Students are introduced to a variety of therapies for treatment of psychiatric disorders.

Fourth-Year Elective Clerkships

During the fourth year, students choose elective rotations. These clerkship rotations can include most specialties, including those from the Core Rotations. Students take electives in blocks, typically of four or six weeks for a total of 30 weeks of electives.

There are 23 recommended elective clerkships:

- Allergy and Immunology
- Anesthesiology
- Cardiology
- Community Health Care
- Critical Care
- Dermatology
- Emergency Medicine
- Endocrinology
- Family Medicine
- Gastroenterology
- Gerontology
- Hematology
- Infectious Disease
- Nephrology
- Neurology
- Oncology
- Ophthalmology
- Pathology
- Preventive Medicine
- Pulmonary Disease
- Radiology
- Rheumatology
- Urology

All students are required to complete four weeks of a primary care elective.

Approved Rotations

Students do not receive credit unless SMUSOM approves and certifies all electives. With permission from the Dean, students may complete electives in conjunction with the core specialties. A student can take additional hours in any Core Rotation as electives. For example, 16 weeks of surgery might represent 12 weeks of Core Electives credit and four weeks of electives credit. Any student who secures a rotation in a hospital that is not affiliated with SMUSOM must have permission from the Dean of Clinical Sciences. If approval is not granted in advance, the unapproved rotation will not earn credit.

Expenses Related to Rotations

Students who attend Core Rotations in the U.S. may be required to make at least two moves to complete the five rotations. Students need to plan for transportation and housing expenses at each location. Students who participate in clinical rotations must purchase medical liability insurance. Additional charges may be due if students choose elective rotations with costs exceeding the standard SMUSOM subsidy rate. Each student will pay for five Clinical Sciences semesters (assuming that no rotations were failed).





At St. Matthew's University School of Medicine, we are as committed to your dream as you are. Our faculty and staff do everything possible to maximize your opportunity to succeed academically.

Faculty and Administration

Board of Trustees

CHAIRMAN

JOHN P. DOCHERTY, MD; SPENCER AMORY, MD; W. CHRISTOPHER CROLEY, MD; JOHN CROCKER; SAHANA VYAS, MD

The distinguished members of this Board of Trustees (Board) are assigned the responsibility of ensuring that the rules and regulations of St. Matthew's University School of Medicine (SMUSOM) meet the highest level of propriety, that they achieve their purpose and that they protect the institution from influences which hinder its academic goals. They also ensure that members of the faculty are qualified for appointment and able competently to perform their function without distraction. The Board also shall exercise supervision of the needs of the student body and recommend steps to make provisions for the welfare of students and the successful pursuit of their studies.

SMUSOM takes this measure to provide supervisory machinery independent of management. The contribution of the Board reinforces our commitment to ensuring that the doctors we graduate are completely prepared and sensitive to the needs of the vulnerable. SMUSOM therefore publicly records its sincerest gratitude to the members of the Board of Trustees who so willingly agreed to join in this endeavor.

St. Matthews's University (Cayman) LTD., is registered with the Florida Department of State as a foreign profit corporation doing business as St. Matthew's University School of Medicine.



Administration

AURELIO, MARIBEL, MD
ASSISTANT DEAN OF STUDENT AFFAIRS,
ASSOCIATE PROFESSOR, PRECLINICAL SCIENCES CHAIR

BASU, AMITABHA
MBBS, MD (PATH), M. CLIN.ED (EDIN), MPH (EDINBURGH).
ASSOCIATE DEAN OF BASIC SCIENCES, PROFESSOR PATHOLOGY
AND CHAIR

BISWAS, PRITAM
MBBS, MD (PHARMACOLOGY), MS CLINED(EDIN.), MACADMED(U.K.)
ASSISTANT DEAN OF ACADEMIC AFFAIRS, ASSOCIATE PROFESSOR
OF MEDICAL PHARMACOLOGY & CLINICAL THERAPEUTICS

BRUZIK, JIM, PHD
ASSOCIATE DEAN, MEDICAL EDUCATION, BASIC SCIENCES

GREEN, GORDON, MD
EXECUTIVE DEAN

HOJNOSKI, JON, MD
ASSOCIATE DEAN OF CLINICAL SCIENCES

MARIN-NEGRON, ADRIANA
DIRECTOR OF ADMISSIONS

MARVIN, JOHN, BS, MBA
MANAGING DIRECTOR

MILLER, RIPLEY
DIRECTOR OF INFORMATION TECHNOLOGY

MIRANDA-AVILA, GLORIA
REGISTRAR

REID, TERRENCE, ED.D., MBA, BA
ASSOCIATE DEAN OF CLINICAL STUDENTS

ROWANDS, ANGELA, MSC, BSC
DIRECTOR, LEARNING CENTER AND
STUDENT COUNSELING



**The leadership at
St. Matthew's University
School of Medicine
bring in-depth experience
and knowledge to
the challenge of
medical education.**

Basic Sciences Faculty

Anatomy

JHA, AMEET KUMAR, PHD, MSC
ASSOCIATE PROFESSOR OF ANATOMICAL SCIENCES

RAO, SEETHARAMA, PHD, MSC, FAGE
PROFESSOR AND CHAIRMAN, ANATOMICAL SCIENCES

Histology and Cell Biology

KUMAR, VASANTHA, PHD, MSC
ASSOCIATE PROFESSOR OF HISTOLOGY AND
CELL BIOLOGY, AND NEUROSCIENCE

HOLLA, SUNIL JONATHAN, MBBS, MS,
FAIMER FELLOW, PGDFM
PROFESSOR OF ANATOMICAL SCIENCES

Neuroscience

DAKUBO, GABRIEL D., BSC (HONS), MB, CHB
ASSISTANT PROFESSOR OF HISTOLOGY AND
CELL BIOLOGY, AND NEUROSCIENCE

Genetics

KING, STEPHANIE E., PHD
ASSISTANT PROFESSOR OF MEDICAL GENETICS,
BIostatISTICS AND EPIDEMIOLOGY

Microbiology and Immunology

SUKUMAR, T.K., MD, MBBS, MASTERS CLINED (EDIN.),
MACADMED (UK)
ASSOCIATE PROFESSOR OF MEDICAL MICROBIOLOGY
& IMMUNOLOGY, COORDINATOR - BASIC LIFE
SUPPORT TRAINING CENTRE

NAYAK, NARENDRA P., MD, MBBS
PROFESSOR OF MICROBIOLOGY AND IMMUNOLOGY,
CHAIR OF MOLECULAR BIOLOGY

Pathology

BASU, AMITABHA, MBBS, MD (PATH), M. CLIN.ED
(EDIN), MPH (EDINBURGH).
ASSOCIATE DEAN OF BASIC SCIENCES, PROFESSOR
PATHOLOGY AND CHAIR

BHOGE, AMIT, MD, MBBS
ASSOCIATE PROFESSOR OF PATHOLOGY

Biochemistry

SHYPILOVA, INNA, MD, PHD
ASSOCIATE PROFESSOR OF MEDICAL BIOCHEMISTRY

Pharmacology

BISWAS, PRITAM, MBBS, MD (PHARMACOLOGY), MS
CLINED(EDIN.), MACADMED(U.K.)
ASSISTANT DEAN OF ACADEMIC AFFAIRS, ASSOCIATE
PROFESSOR OF MEDICAL PHARMACOLOGY & CLINICAL
THERAPEUTICS

HILGERS, ROB, PHD
ASSISTANT PROFESSOR OF MEDICAL PHARMACOLOGY,
EVIDENCE-BASED MEDICINE, AND HIPAA

Physiology

BARKE, PRAJNA, MD, MBBS
PROFESSOR AND COURSE DIRECTOR OF PHYSIOLOGY

CHHETRI, PRAGHOSH, MD, MBBS, MSC
ASSISTANT PROFESSOR OF MEDICAL PHYSIOLOGY

Preclinical Sciences

AURELIO, MARIBEL, MD
ASSISTANT DEAN OF STUDENT AFFAIRS, ASSOCIATE
PROFESSOR, PRECLINICAL SCIENCES CHAIR

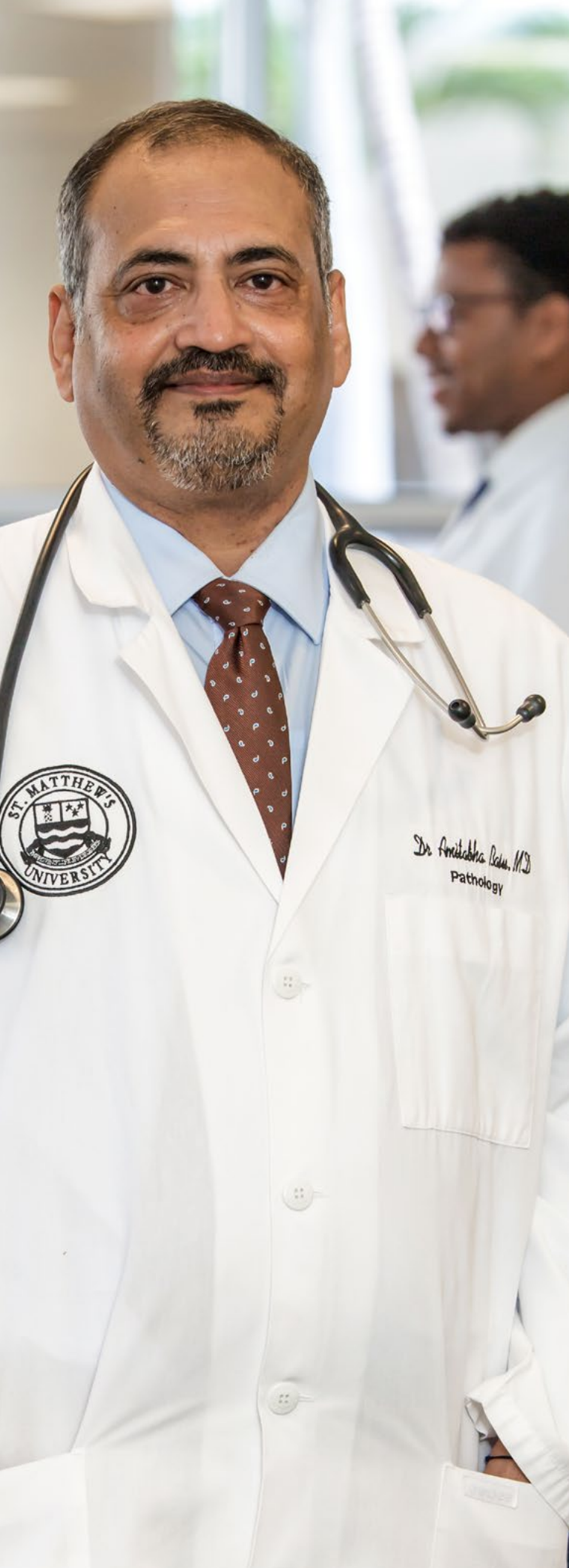
KULBERG, ROMINA PAOLA, MD
ASSISTANT PROFESSOR OF PRECLINICAL SCIENCE
AND BEHAVIOURAL SCIENCE

MARZAN, GIMENA, MD
ASSISTANT PROFESSOR OF PRECLINICAL SCIENCE

Student Services

ROWANDS, ANGELA, MSC, BSC
DIRECTOR, LEARNING CENTER AND STUDENT
COUNSELING

WALTON, LYNNE
STUDENT HOUSING SUPPORT & COORDINATOR/
INTERNATIONAL STUDENT SETTLEMENT ADVISOR



Clinical Chairs

Psychiatry: Pending Appointment

HANNA, IBRAHIM “PETE”, MD
PROFESSOR AND CHIEF DEPARTMENT OF SURGERY
University of Damascus
American Board – Surgery

LING, FRANK, MD
PROFESSOR AND CHIEF DEPARTMENT OF OBSTETRICS AND GYNECOLOGY
University of Texas Southwestern Medical School
American Board – Obstetrics and Gynecology

MIR, MOHAMMAD, MD
PROFESSOR AND CHIEF DEPARTMENT OF PEDIATRICS
Universidad CETEC Santa Domingo
American Board - Pediatrics

WILLIAMS, RICHARD B., MD
PROFESSOR AND CHIEF DEPARTMENT OF INTERNAL MEDICINE
University of Virginia School of Medicine
American Board –Internal Medicine

Clinical Sciences Faculty

ACHEAMPONG, DERRICK, MD
ASSISTANT PROFESSOR PSYCHIATRY
Icahn School of Medicine at Mount Sinai
American Board - Psychiatry

ALABI, FORTUNE, MD
ASSISTANT PROFESSOR INTERNAL MEDICINE
University of Llorin Medical school
American Board -Internal Medicine, Critical Care Medicine, Pulmonary Medicine, Sleep Medicine

ALI, SYED, M.D.
DOW MEDICAL COLLEGE
American Board – Internal Medicine, Cardiology

AMDEMICHAEL, EDEN, MD
ASSISTANT PROFESSOR SURGERY
Rush Medical College of Rush University
American Board - Surgery

ARMSTRONG, CHRISTOPHER, MD
ASSISTANT PROFESSOR INTERNAL MEDICINE
Loma Linda University Medical school
American Board -Internal Medicine

BEKELE, AMMER, MD

ASSISTANT PROFESSOR INTERNAL MEDICINE

Addis Ababa University Medical Faculty Medical School
American Board -Internal Medicine

BODNAR, TETYANA, MD

ASSISTANT PROFESSOR PSYCHIATRY

Northeast Ohio Medical University
American Board – Psychiatry, Forensic Psychiatry

CABRERA, ALICIA, MD

ASSISTANT PROFESSOR INTERNAL MEDICINE

Instituto Superior De Ciencias Medicas De La Habana
American Board -Neurology

CHABAN, CARLOS, MD

ASSISTANT PROFESSOR PEDIATRICS

Universidad De Medicina Centro De Estudios Tecnicos
Medical school
American Board - Pediatrics

CHRISTIAN, FRANCIS, MD

ASSISTANT PROFESSOR INTERNAL MEDICINE

St. Matthews University School of Medicine
American Board -Internal Medicine

CORDERO, ARELIS, MD

ASSISTANT PROFESSOR INTERNAL MEDICINE

Universidad Autonoma de Guadalajara School of Medicine
American Board -Internal Medicine, Pulmonary Medicine

DAMLE, SAMEER, MD

ASSISTANT PROFESSOR SURGERY

University of Minnesota Medical school
American Board - Surgery

DIAZ, ALBA, MD

ASSISTANT PROFESSOR INTERNAL MEDICINE

Universidad Iberoamericana School of Medicine
American Board -Internal Medicine

EL TOUKHY, AMR, MD

ASSISTANT PROFESSOR INTERNAL MEDICINE

Ain Shams University Medical school
American Board -Internal Medicine

ESAT, MERIAM, MD

ASSISTANT PROFESSOR INTERNAL MEDICINE

Godfrey Huggins School of Medicine
American Board -Internal Medicine, Infectious Disease

FERNANDEZ, MILAGROS. MD

ASSISTANT PROFESSOR SURGERY

University of Puerto Rico School of Medicine
American Board - Surgery

HALE, DAVID, MD

ASSISTANT PROFESSOR PEDIATRICS

Ross University School of Medicine
American Board - Pediatrics

HALILI, FRANCISCO, MD

ASSISTANT PROFESSOR SURGERY

University of Miami School of Medicine
American Board - Surgery

HAMDALLAH, ISAM, MD

ASSISTANT PROFESSOR SURGERY

Jordan University of Science and
Technology School of Medicine
American Board - Surgery

HAROON, OMER, MD

ASSISTANT PROFESSOR PSYCHIATRY

American University of Antigua College of Medicine
American Board - Psychiatry

IONESCU, DANIEL, MD

ASSISTANT PROFESSOR PSYCHIATRY

University of Medicine and Pharmacy “Iuliu Hatieganu”
American Board - Psychiatry

ISMAIL, SALMA, MD

ASSISTANT PROFESSOR FAMILY MEDICINE

St. George’s University Medical school
American Board -Internal Medicine

KANAGARAJAH, PRASHANTH, MD

ASSISTANT PROFESSOR INTERNAL MEDICINE

Madras Medical College
American Board -Internal Medicine

KHATTAK, RAIHAAN, MD

ASSISTANT PROFESSOR INTERNAL MEDICINE

American University of Antigua School of Medicine
American Board -Internal Medicine

KOVACEVIC, NEDA, MD

ASSISTANT PROFESSOR PSYCHIATRY

University of Belgrade School of Medicine
American Board - Psychiatry

KUEHL, SAPNA MD

ASSISTANT PROFESSOR INTERNAL MEDICINE

University of Maryland School of Medicine
American Board -Internal Medicine

KWAK, MICHAEL, MD

ASSISTANT PROFESSOR INTERNAL MEDICINE

Florida International University Wertheim
College of Medicine
American Board -Internal Medicine

LAMA, MAXIMO, MD

ASSISTANT PROFESSOR INTERNAL MEDICINE

Instituto Tecnológico de Santo Domingo
American Board -Internal Medicine, Pulmonary Medicine,
Critical Care Medicine

LAWRENCE, GEORGE, MD

ASSOCIATE PROFESSOR INTERNAL MEDICINE

Tufts University Medical school
American Board -Internal Medicine

MAMSA, ABDUL, MD

ASSISTANT PROFESSOR INTERNAL MEDICINE

Dow Medical College
American Board -Psychiatry & Neurology

MATA, BYRON, MD

ASSISTANT PROFESSOR INTERNAL MEDICINE

Universidad Catolica Santiago de Guayaquil
Medical School
American Board -Family Medicine, Geriatric Medicine

MOOSA, MOHAMMED, MD

ASSOCIATE PROFESSOR INTERNAL MEDICINE

Dow Medical College
American Board -Internal Medicine/Geriatric Medicine

MYNENI, VAMSHI, MD

ASSISTANT PROFESSOR PSYCHIATRY

Gandhi Medical College
American Board - Psychiatry

NADEEM, SHAH, MD

ASSISTANT PROFESSOR PSYCHIATRY

Sindh Medical College
American Board - Psychiatry

NADEEM, SUMERA, MD

ASSISTANT PROFESSOR PSYCHIATRY

Dow Medical College
American Board – Psychiatry and Neurology

OMANA, JUAN, MD

ASSISTANT PROFESSOR SURGERY

Universidad de Montemorelo School of Medicine
American Board – Surgery

OPPENHEIM, RONALD, MD

ASSISTANT PROFESSOR NEUROLOGY

University of Cincinnati College of Medicine
American Board - Psychiatry & Neurology

PAINE, MALCOLM, MD

ASSISTANT PROFESSOR OBSTETRICS AND GYNECOLOGY

University of Glasgow Medical school
American Board - Obstetrics and Gynecology

QUADRI, HUMAIR, MD

ASSISTANT PROFESSOR SURGERY

Georgetown University School of Medicine
American Board – Surgery, Surgical Oncology

QURESHI, HASSAN, MD

ASSISTANT PROFESSOR PSYCHIATRY

Quaid-e-Azam Medical College
American Board - Psychiatry

RASHID, NAVID, MD

ASSISTANT PROFESSOR PSYCHIATRY

George Washington University School of Medicine
American Board - Psychiatry

REDDY, LOKESH, MD

ASSOCIATE PROFESSOR PSYCHIATRY

J.J.M. Medical College
American Board – Psychiatry and Neurology, Addiction
Psychiatry, Child & Adolescent Psychiatry

RIFAI, FAYSAL, D.O.

ASSISTANT PROFESSOR INTERNAL MEDICINE

Alabama College of Osteopathic Medicine
American Board -Internal Medicine

ROJAS, MATIAS, MD

ASSISTANT PROFESSOR INTERNAL MEDICINE

National University of Cuyo/Universidad Nacional de Cuyo
American Board -Internal Medicine

SAMPSON, KIMBERLEY, MD

ASSOCIATE PROFESSOR OBSTETRICS AND GYNECOLOGY

St. Matthews University School of Medicine
American Board - Obstetrics and Gynecology, Obesity
Medicine

SAREEN, SAPNA, MD
ASSISTANT PROFESSOR PSYCHIATRY
Xavier University School of Medicine
American Board - Psychiatry

SARODI, SADIA, MD
ASSISTANT PROFESSOR PSYCHIATRY
American University of Antigua College of Medicine
American Board - Psychiatry

SEN, KAMALENDRA, MD
ASSISTANT PROFESSOR PSYCHIATRY
Sir Salimullah Medical College
American Board - Psychiatry and Neurology, Child & Adolescent Psychiatry

SIDDIQI, NAVAID, MD
ASSISTANT PROFESSOR INTERNAL MEDICINE
University of the West Indies Medical school
American Board -Internal Medicine

SLOWICK, PIOTR, MD
ASSOCIATE PROFESSOR PSYCHIATRY
Hands On Therapy School of Massage Medical School
American Board - Psychiatry

SMALL, THEMARGE, MD
ASSISTANT PROFESSOR OBSTETRICS & GYNECOLOGY
UCLA David Geffen School of Medicine
American Board - Obstetrics and Gynecology

STEVENS, ANDREW, MD
ASSISTANT PROFESSOR INTERNAL MEDICINE
St. Matthews University School of Medicine
American Board -Internal Medicine

SUPANEKAR, JYOTI, MD
ASSISTANT PROFESSOR PSYCHIATRY
Government Medical College
American Board - Psychiatry

TEWOLDE, SELAM, MD
ASSISTANT PROFESSOR INTERNAL MEDICINE
Addis Ababa University Medical Faculty Medical School
American Board -Internal Medicine

TRESTER, RICHARD, MD
ASSISTANT PROFESSOR OBSTETRICS AND GYNECOLOGY
University of Health Sciences/ Chicago Medical School
American Board - Obstetrics and Gynecology

UMEH, FRED, MD
ASSISTANT PROFESSOR INTERNAL MEDICINE
University of Nigeria College of Medicine
American Board -Internal Medicine, Pulmonary Medicine, Critical Care Medicine

YOUSEFI, KIARASH, MD
ASSISTANT PROFESSOR PSYCHIATRY
Kerman Medical University
American Board - Psychiatry

YUNK, JOHANNA, MD
ASSISTANT PROFESSOR FAMILY MEDICINE
St. George's University School of Medicine
American Board -Family Practice

ZATINA, MICHAEL, MD
ASSOCIATE PROFESSOR OF SURGERY
University of Michigan Medical School
American Board - Surgery - General Surgery and Vascular Surgery

All SMUSOM faculty have advanced medical and/or doctoral degrees (MD, PhD) or equivalent, as well as demonstrated experience in teaching and/or research. Our dedicated full-time faculty are assisted by adjunct faculty who are medical experts and travel to Grand Cayman each semester to teach our students.



Dr. Regina Babal
Department of Preclinical Sciences

Arisbel A. Aurelio M.D.
Preclinical Sciences

Standards of Performance

REGISTRATION

Students must be registered and enrolled at all times unless they have received written approval for a “Leave of Absence.” Students may take only up to a total of two Leaves of Absence during their entire career at SMUSOM, and only after receiving written approval from the Dean of Basic Sciences (for Basic Sciences students) or the Dean of Clinical Sciences (for Clinical Sciences students). Granting a Leave of Absence is the Dean’s prerogative, but no more than a total of two will be allowed for any student. No Leaves of Absence will be granted after a student has completed all Basic Sciences and Clinical Sciences coursework.

If a student fails to enroll, their status will become “Withdrawn” and the student must apply for readmission. Students will not automatically be considered enrolled. Possible student status’ includes only: Basic Sciences (semester noted), Clinical Sciences (semester noted), Approved Leave of Absence (up to two semesters total), Pending Graduation, Withdrawn, Dismissed, Alumni or Deceased.

The registration process is as follows:

Registration will begin online (www.smuonline.com) approximately six weeks prior to the beginning of the upcoming semester. All new and returning Basic Sciences students register at this time. Transfer students and students who have failed courses must correspond with the Dean prior to registering.

The Registrar will coordinate with the Deans for course approval and the Associate Deans of Student Affairs to ensure that all rosters are correct. The Registrar will verify class attendance to Student Accounts so that Financial Aid monies can be released to students. All students must be registered by the end of each semester’s registration period. Registration for Clinical Sciences students is a two-part process:

- The student electronically accepts the e-RAF issued by the Clinical Coordinator from the Clinical Sciences department or returns a signed National Board RAF or Leave of Absence form to the Clinical Coordinator.
- The student must complete online registration for each Clinical semester, National Board semester or Leave of Absence.

Any student who fails to comply with these registration procedures will not be admitted into classes for the new semester (Basic Sciences) and/or will not receive credit for a core or elective rotation (Clinical Sciences). Any student who is in a rotation and has not followed required registration procedures will be removed from that rotation. No credit will be given.





STUDENT PERFORMANCE

Student performance is determined on the basis of achievement in each prescribed course or clinical clerkship objective. Students must achieve a passing level established by the faculty of each course or clinical clerkship rotation to earn promotion from semester to semester. Performance is recorded as Honors, High Pass, Pass or Fail. The faculty evaluates each student's knowledge, problem solving abilities, clinical competence, personal and professional maturity, interpersonal and communication skills, and technical skills.

Graduates who intend to practice medicine in the U.S. must earn ECFMG Certification. ECFMG Certification requires successful completion of the USMLE Steps 1 and 2. Students who intend to practice medicine outside of the U.S. must meet the licensing requirements of the country where they want to practice.

PROBATION

A student who receives an unsatisfactory grade in a single course or clerkship may be placed on academic or clinical probation. Probation usually does not affect attendance in subsequent courses or clerkships, though graduation could be delayed.

FAILING A COURSE

Failed courses are listed on the transcript. When the course is repeated, it is listed a second time along with the grade received. Any Basic Sciences student who does not achieve satisfactory results in courses that award nine credits or more will be eligible for academic dismissal. Any student who does not pass a course by the second attempt will be eligible for academic dismissal. Any student who receives a failing grade while on academic probation will be eligible for dismissal.

ATTENDANCE

Basic Sciences classes at SMUSOM are small and interaction between students and teachers is encouraged. Students are expected to attend all class sessions. The mandatory 80% attendance policy is strictly enforced. If a student misses more than 20% of the scheduled class time, the student will fail that course regardless of academic performance.

INCOMPLETE AND WITHDRAWAL POLICIES

To receive an “Incomplete” for a course requires the approval of both the professor of that course and the written approval of the Dean of Basic or Clinical Sciences. Withdrawal from a course is permitted under some circumstances, which are described in the Student Handbook.

OFFICIAL LEAVES OF ABSENCE

The Dean of Basic or Clinical Sciences will consider all requests for an Official Leave of Absence by students who:

- Experience financial hardship and need to take time off to raise funds for their education.
- Suffer an illness or injury, or have a family member who suffers an illness or injury that requires the student’s presence.
- Need limited time off to take advantage of an educational opportunity to travel, conduct research or attend classes elsewhere.

Only two Leaves of Absence may be granted. Each request is subject to the approval of the Dean of Basic or Clinical Sciences. The Dean decides whether a semester away is likely to allow the student to resolve a situation, and whether the student’s performance and behavior suggest a reasonable chance of success upon their return.

Students who are not granted official leaves may apply for readmission when ready to resume their education. Students may be required to begin paying any outstanding debt to SMUSOM if they fail to enroll.

GRIEVANCE AND APPEALS PROCESS

Students seeking to resolve problems or complaints should first contact the appropriate instructor or clinical administrator. Students have the right to file a grievance or appeal a decision of the school.

There are due process protections in place when there is the possibility of SMUSOM taking an adverse action against a medical student for academic or professionalism reasons. Students should refer to the Student Handbook for more detailed information and instructions regarding grievance and appeal processes.

Graduation, ECFMG Certification, and Licensure

GRADUATION REQUIREMENTS

Students must successfully complete:

- All Basic Sciences courses, with passing grades for each course
- 42 weeks of third-year core clinical rotations, with passing grades for each rotation
- National Board of Medical Examiners (NBME) Core Clerkship examinations
- All clinical rotation patient log books
- 30 weeks of fourth-year elective rotations, with passing grades for each rotation
- SMUSOM must receive a satisfactory evaluation from each preceptor for credit of a rotation to be awarded
- Passing scores on the United States Medical Licensing Exam (USMLE) Step 1 and Step 2
- Intent to Graduate form
- Graduation Fee of \$500 USD
- Clear balance with Student Accounts
- Pre-Graduation Questionnaire

ECFMG CERTIFICATION

Graduates who wish to enter a residency or fellowship program accredited by the Accreditation Council for Graduate Medical Education (ACGME) must be certified by the Educational Commission for Foreign Medical Graduates (ECFMG) before they can enter the program. They must also be certified by ECFMG if they wish to take Step 3 of the three-step United States Medical Licensing Examination (USMLE). ECFMG Certification is also one of the requirements to obtain a license to practice medicine in the United States.

The purpose of ECFMG Certification is to assess the readiness of graduates from international medical schools to enter U.S. residency and fellowship programs that are accredited by the ACGME. To be certified by ECFMG, you must pass a series of exams; you must also fulfill ECFMG medical education credential requirements.

These requirements include providing ECFMG with copies of your medical diploma and your final medical school transcript (from a WHO listed school), which ECFMG will verify directly with the medical school. Please visit this site for updates and additional information: www.ecfm.org.

SMUSOM graduates participate in the National Resident Matching Program (NRMP) along with U.S. medical graduates through the Electronic Residency Application Service (ERAS). Please visit this site for more information: www.ecfm.org

LICENSURE

St. Matthew's University School of Medicine prepares its students for the practice of medicine. Students should familiarize themselves with the licensure and certification requirements of the jurisdiction(s) in which they may wish to practice. All students are required to sit for and pass Steps 1 and 2 of the United States Medical Licensing Exams (USMLE), regardless of whether they intend to practice in the United States.

In accordance with SMUSOM's regulatory and accrediting requirements, all students are further required to report their USMLE scores to the school, provide consent allowing ECFMG to report their scores to SMUSOM, and provide a consent allowing the SMUSOM to report their scores to the school's regulatory and accrediting bodies.

Standards of Professional Behavior & Academic Honesty

STUDENT CONDUCT, ACADEMIC HONESTY AND DISCIPLINARY PROCEDURES

Each student is expected to behave in a manner consistent with SMUSOM's mission as an educational institution. Behaviors judged unprofessional, unethical, dishonest, illegal, threatening or dangerous may be considered examples of misconduct. Specific examples of violations that fall under the purview of SMUSOM's disciplinary policies can be found in the Student Handbook. Also included in the Student Handbook are Guidelines for Academic Honesty. SMUSOM expects all students to engage in academic pursuits in a manner that is above reproach. Students are expected to maintain complete honesty and integrity in the academic experiences both

in and outside the classroom. Any student found guilty of dishonesty in any phase of academic work will be subject to disciplinary action. Specific definitions and policies regarding cheating, plagiarism, unauthorized collusion and abuse of resource materials can be found in the Student Handbook.

Disciplinary referrals are handled by the Associate Dean of Basic Sciences. The Associate Dean will conduct an initial investigation and may then administer the necessary remedies or refer the case to the school's Disciplinary Committee for more extensive investigation and a judicial hearing. When it is determined that a disciplinary violation has occurred, the Disciplinary Committee can recommend remedies ranging from a verbal or written warning to suspension or dismissal. Procedures and policies regarding the administration of disciplinary hearings and associated remedies can be found in the Student Handbook.

ANTI-HAZING POLICY

St. Matthew's University School of Medicine students shall not engage in hazing in any form. Information on any violations of SMUSOM's anti-hazing policy should be reported immediately to the Associate Dean of Basic Sciences. Confirmed instances will be subject to disciplinary action, which could be as severe as dismissal from SMUSOM.

Center for Learning *Enhancement*



At St. Matthew's University School of Medicine, we are as committed to your dream as you are. Our faculty and staff do everything possible to maximize your opportunity to succeed academically.

To that end, we have developed SMUSOM's Center for Learning Enhancement (CLE). This center is a set of services integrated with the overall program for learning at SMUSOM. The CLE's mission is to assist and encourage medical students to develop their academic and personal skills to foster greater academic success. This is accomplished through the provision of impactful CLE services, such as faculty reviews and tutoring, teaching assistants, peer tutoring, student mentors and academic development workshops. Qualified counselors also serve as Academic Advisors to offer individual help on request.

FACULTY REVIEWS AND TUTORING

For the Basic Sciences courses, the faculty offer general review sessions outside of normal class times. These sessions, available to any and all SMUSOM students, review the key points covered in the course.

Basic Sciences faculty also offer small group tutoring sessions, which provide practice exam questions and other practical techniques to help improve students' test-taking skills. Finally, after each exam, faculty schedule one-on-one time to review test questions with students. Students with poor exam results are expected to schedule additional time with faculty to review the areas where the individual student struggled with the material.

The faculty member who teaches the course is the first person to whom a student should turn for help, but other resources are available through the Office of Student Affairs' Center for Learning Enhancement.

TEACHING ASSISTANTS

At SMUSOM, we recognize the value of peer-assisted learning. Teaching Assistants are upper-semester Basic Sciences students who have demonstrated an excellent knowledge of course material. They schedule group sessions in which they review practice questions provided by professors, as well as other materials to support the student's understanding of course material. They also suggest learning strategies that have worked well for them in a given course. Teaching Assistants provide help at no cost to the student needing support.

INDIVIDUAL PEER TUTORS

Students who have excelled in given courses are invited by SMUSOM to serve as individual peer tutors. These students are available for individual help in each course. The Office of Student Affairs arranges for tutors on request from students, but fees and meeting schedules are arranged between the tutor and the student. Academic Advisors in the Office of Student Affairs are also available to offer general assistance to students with the following:

- Organization of course materials.
- Time management.
- How to study for and take multiple choice exams.
- Reading for retention.
- Stress management strategies.
- Listening for Learning: How to maintain good attention in lectures.
- Assessment of academic strengths and weaknesses with specific recommendations for remediation as indicated.

STUDENT MENTORS

Prior to arrival on Grand Cayman, incoming students can be put in contact with Student Mentors who are available to assist with a variety of issues related to adjusting to life on Grand Cayman and in school.

TESTING ACCOMMODATIONS

Requests for testing accommodations are processed by the Office of Disability Resources. We encourage students to apply at odr@stmatthews.edu as early as possible to ensure that they are granted the necessary accommodation prior to first exams.

ACADEMIC DEVELOPMENT WORKSHOPS

All students interested in improving their academic performance may participate in Academic Development Workshops. These workshops focus on key skills required to be academically and professionally successful, including:

- Developing study skill competency in medical education.
- Peer support and study groups.
- Examination strategies and preparation.
- Creating an effective study schedule.
- Note-taking and concept mapping.
- Stress management and healthy living.

Student Services

FACULTY ADVISORS

Faculty advisors at SMUSOM serve as a source of support for students as they transition to living on Grand Cayman and begin navigating the rigors of medical school. Reach out to the Administration team if you would like to connect with a Faculty Advisor.

NEW STUDENT ORIENTATION

Each new class and all transfer students are scheduled for orientation, course registration and advising activities just prior to the first day of classes. The Offices of the Associate Dean of Student Affairs and Dean of Basic Sciences collaborate with faculty, staff and returning students to facilitate the introduction of new students to SMUSOM administrators, faculty, teaching and learning philosophies, programs, policies, and procedures. Members of the student government introduce new students to life on campus and are available to answer questions about the SMUSOM experience. First-year students are also encouraged to actively participate in their Pods, which are small groups of Semester 1 students that meet weekly with Course Directors or teaching faculty to ask questions or discuss challenges. Pod membership is assigned by the Director of the Learning Center and Student Support.

ACADEMIC ASSISTANCE, GUIDANCE AND COUNSELING

The Associate Dean of Student Affairs works closely with the Dean of Basic Sciences, as well as with faculty, to provide support to students experiencing academic and/or personal difficulties. Short-term counseling, crisis

counseling and general counseling relating to academic difficulties is available through the Associate Dean of Student Affairs.

If longer-term counseling and support is required, referrals can be made to professionals in the community. Academic counseling related to test-taking skills, time management skills and study skills can also be initiated. The Associate Dean of Student Affairs also serves as a liaison between the Student Government Association (SGA) and the SMUSOM administration.

INFORMATION TECHNOLOGY

SMUSOM utilizes high-speed networking to aid in the delivery of classroom and study materials. To ensure a smooth user experience, students are required to own a laptop or notebook computer during their entire time in med school.

RESIDENCE HALL

Even though Grand Cayman is a wonderful place to live, moving to a new country can be stressful.

“Where am I going to live?” is one of the most frequently asked questions from prospective students. For a smooth transition to the island, SMUSOM students may choose to live in the independently owned and operated Residence Hall. Only two miles from campus in the Seven Mile Beach area, the Residence Hall offers single and double rooms.

Prices include all utilities, high-speed internet connection, cable and weekly maid service. A refrigerator and microwave are provided in each room and a fully-stocked kitchen and laundry room are available onsite. The dedicated Residence Hall staff is available to you for information 12 hours every day. Located adjacent to a shopping center and a large, U.S. style supermarket, the Residence Hall offers ease of living.

During your first four months on Grand Cayman, you will have time to explore the island, find out where you want to live and prepare to move into your own apartment or remain in the Residence Hall. This will allow you to secure living arrangements with a realistic knowledge of the island. Living in SMUSOM-approved housing is mandatory for the initial semester for all new students for these reasons. Please do not hesitate to contact the Residence Hall Coordinator with any questions or concerns. A Residence Hall Agreement will be sent to all accepted students.

RESIDENCE HALL FEES

ROOM TYPE	USD PER SEMESTER
Standard Single	\$4,950 USD
Standard Suite Single Occupancy	\$5,690 USD
Standard Suite Double Occupancy	\$3,430 USD (Per Student)
Deluxe Suite Single Occupancy	\$6,095 USD
Deluxe Suite Double Occupancy	\$3,750 USD (Per Student)

Learn more: medicine.stmatthews.edu/student-experience

OFF CAMPUS HOUSING

The housing market on Grand Cayman is strong and presents many opportunities for student tenants to find homes. Most rental units come furnished (i.e., stocked with standard furnishings, such as beds, tables, appliances, couches, window dressings, etc.) or fully furnished (i.e., everything but your own clothes and personal belongings is included). Utility costs (e.g., for electricity, water, etc.) are expensive compared to U.S. standards. Rental rates are generally highest in the Seven Mile Beach, George Town and South Sound areas. Security deposits are common and usually equal one month's rent, so be sure to figure this into your budget.

Housing can become somewhat more difficult to find if you have young children or pets living with you or if you prefer to smoke inside. Landlords and property managers have the right to refuse to rent to you for these reasons. Fortunately, off-campus housing advice and support is available to all SMUSOM students.

RECREATION

Numerous recreational and sporting opportunities are available for students. SMUSOM has corporate memberships at local gyms that students may access. Seven Mile Beach is only steps away from the campus and several golf, cycling and running areas are nearby. Many local sports leagues are open to students. Significant discounts are often available for SMUSOM students on recreational activities, dining and shopping.

Student Support Services Programming (Wellness)

At SMUSOM, we believe that a healthy mind and body are essential for personal and academic success. Our wellness activities are designed to promote physical, emotional and social well-being.

COMMUNITY-BUILDING EVENTS

SMUSOM celebrates the power of community. Through a variety of vibrant events and initiatives, we are dedicated to creating a supportive and inclusive atmosphere where every student feels a deep sense of belonging and connection. From social gatherings to collaborative activities, these community-building efforts ensure that your medical school experience is enriched with camaraderie, friendship and lasting memories.

THE STAY HEALTHY AT SCHOOL PROGRAM

St. Matthew's University School of Medicine partners with StudyInsured™ to offer access to flexible, holistic support for those managing a variety of mental health challenges, including stress, anxiety and various outside pressures

Learn more: medicine.stmatthews.edu/blog/smusom-mental-health-matters-stay-healthy-at-school-program

Health and Immunization Information

MEDICAL DECLARATION COVER LETTER

Students must complete and submit the Medical Declaration Cover Letter, available at: medicine.stmatthews.edu/downloads

HEALTH SERVICES

There are three modern hospitals on Grand Cayman that provide affordable basic health care services. All students are required to maintain a personal health insurance policy.

Student Government & Organizations

STUDENT GOVERNMENT ASSOCIATION (SGA)

Once every semester, each class of medical students elects Student Government representatives. The Student Government communicates student body concerns and consults with the Office of Student Affairs on matters related to student life at SMUSOM. The SGA also nominates students to represent the student body on select school committees. Students are encouraged to address any concerns they might have to their elected representatives or to the SGA executive members.

MUSLIM STUDENT ASSOCIATION

The Muslim Student Association (MSA) works to promote a unified group of Muslim and non-Muslim students by educating the surrounding community about Islam, faith and medical practice. The MSA strives to offer support and aid to all new students at SMUSOM by sharing learning strategies and specific course tactics. In conjunction with Cayman service groups, the MSA volunteers in the community to provide service to those in need through hosting events and educational programs.

RESEARCH ORGANIZATION

The Research Organization of St. Matthew's University School of Medicine encourages students to participate in research by working independently and with colleagues and faculty. Their annual Research Day showcases student research posters, displaying and sharing their studies with the entire campus community. They are also interested in helping physicians



on the island and around the world conduct their research by volunteering in community events. The Research Organization emphasizes and fosters leadership, the importance of research and evidence-based medicine, and the foundation of life-long learning for future physicians.

EMERGENCY MEDICINE INTEREST GROUP (EMIG)

The mission of the student-run Emergency Medicine Interest Group (EMIG) is to bring awareness to the specialty of Emergency Medicine. Membership will provide students an opportunity to acquire the judgment and confidence necessary to become competent physicians through the development and advancement of relevant clinical skills.

Through EMIG organized events and activities, students gain knowledge of the specialty. They will also be provided an opportunity to participate in hands-on clinical skills labs and workshops, led by practicing U.S. Emergency Medicine physicians and SMUSOM faculty.

Club meetings allow students to learn about the multifaceted aspects of emergency medicine, with topics ranging from current health care issues and trends to suturing workshops, IV placement, EKG, airway management and more. Their goal is to introduce emergency medicine as a potential career path and help build a more confident future physician.

DIVERSITY & OPPORTUNITY

It is the policy of St. Matthew's University School of Medicine that there shall be no discrimination against persons because of race, religion, age, creed, color, gender, disability, sexual orientation, national origin, marital status, veteran status, or political belief or affiliation, and that equal opportunity shall be available for all. SMUSOM is pleased and proud to have a remarkably diverse student body.

Disclaimer

The information in this catalog is subject to change. Such changes may be without notice. Potential students should not consider this catalog to represent a contract between St. Matthew's University School of Medicine and an entering student. Tuition, fees and other expenses are listed in U.S. dollars, unless otherwise noted. SMUSOM disclaims any misrepresentation that may have occurred as a result of errors in preparation or typesetting of the catalog.



Experience world-class medical training at St. Matthew's University School of Medicine.



TO LEARN MORE, SCAN THE QR CODE OR VISIT
medicine.stmatthews.edu

CAMPUS ADDRESS

Regatta Office Park, West Bay
Grand Cayman, Cayman Islands

+1 345.945.3199

info@stmatthews.edu

MAILING ADDRESS

P.O. Box 30992, Grand Cayman
Cayman Islands, KY1-1204

+1 345.945.3199

info@stmatthews.edu

US ADMISSIONS OFFICE

11486 Corporate Blvd., Suite 120
Orlando FL, 32817

+1 345.945.3199

admissions@stmatthews.edu



**ST. MATTHEW'S
UNIVERSITY**

PART OF



**GUS Medical
& Veterinary
Schools**

St. Matthew's University School of Medicine is part of GUS Medical & Veterinary Schools.

SMUSOM Catalogue | 2024-2026

Information in this catalogue is correct at the time of publication and is subject to change.

Last Update: December 11, 2024

FOLLOW SMUSOM ON

[@stmatthewsedu](#)

[@stmatthewsedu](#)

[@stmatthewsu](#)

[@stmatthewsedu](#)